

PREVIOUSLY ON THE SLOW SESSION LIST:

- Gallagher's frolics (Em) / The swallowtail (Em)
- Lá Fhéile Bríde (D) / The Scotsman over the border (D) / The Cordal (D)
- The Salamanca (D) / The banshee (G) / The pigeon on the gate (Em)
- Denis Murphy's polka (D) / John Ryan's polka (D) / Ievan Polkka (Bm)
- The lark in the morning (D)
- Cronin's hornpipe (G) / The rights of man (Em)
- The promenade (Am) / The boys of Ballisodare (G)
- Fred Finn's reel (D) / The Dunmore lasses (Em)
- The blackthorn stick (G) / Haste to the wedding (D) / Merrily kissed the quaker (G)
- Out on the ocean (G) / The humours of Ennistymon (G)
- George White's favourite (G) / The maid behind the bar (D)
- The hag at the churn (D) / Morrison's jig (Em) / The Kesh jig (G)
- The watermen's dance (D) / The kid on the mountain (Em) / The butterfly (Em)
- The hare in the corn: Rathawaun (D) / The cat in the corner (G)
- Father O'Flynn (D) / The Killavil jig (Em)
- Kitty lie over (D) / The old favourite (G)
- The lilting banshee (Am) / The Humours (East) of Glendart (D)
- The Kerry polka (G) / The britches full of stitches (G)
- The boys of Bluehill (D) / The pride of Petravore (Em)
- John Kelly's (G) / Dan Collins' father's (G)
- The Sally Gardens (G) / The humours of Tulla (D)
- The king of the fairies (Em)
- The wedding reel (D) / The sailor's bonnet (D)
- The little stack of barley (G) / Off to California (G)
- The mountain road (D) / Cooley's reel (Em)
- Father Kelly's (G) / The sailor on the rock (D)
- The red piper (Dm)
- An Ceannabháin Bhána (G) / Hardiman the fiddler (D) (No Sheet Music)

Gallagher's frolics



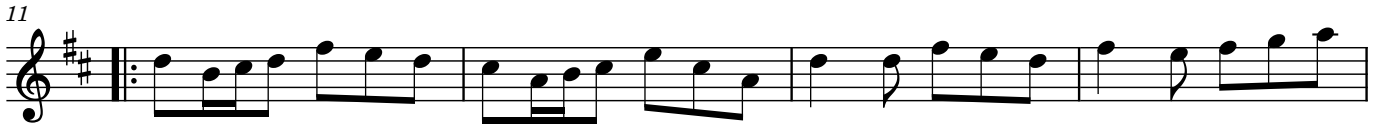
The Swallowtail



The Scotsman Over The Border



The Cordal



The Salamanca

reel

traditional

♩ = 90



The Pigeon On The Gate

Reel

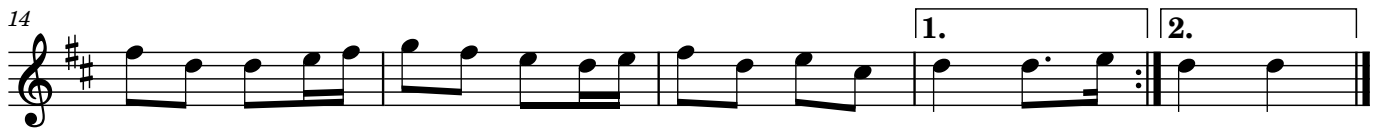


Denis Murphy's Polka



John Ryan's Polka

(The Armagh Polka)



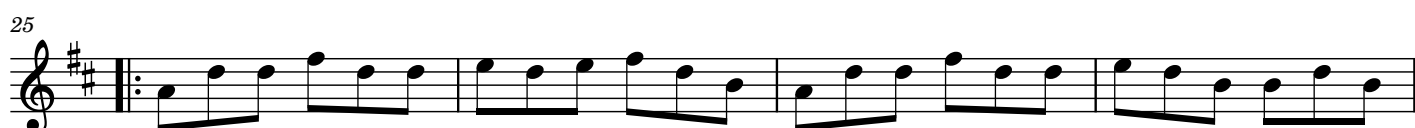
The Finnish Polka

Ievan Polkka



The Lark in the Morning

Trad.



Cronin's Hornpipe

Swing

Musical notation for the first staff, measures 1-4. The key signature is one sharp (F#) and the time signature is 4/4. The melody consists of eighth and quarter notes. A triplet of eighth notes is indicated at the end of the staff.

5

Musical notation for the second staff, measures 5-8. Measures 5-7 continue the melody. Measure 8 is the start of a first ending, marked with a box and '1.', containing a triplet of eighth notes. This is followed by a repeat sign and a second ending, marked with a box and '2.', which concludes with a triplet of eighth notes.

10

Musical notation for the third staff, measures 9-13. Measure 9 is the start of a first ending, marked with a box and a repeat sign. Measures 10-12 continue the melody. Measure 13 is the end of the first ending, marked with a box and a triplet of eighth notes.

14

Musical notation for the fourth staff, measures 14-17. Measures 14-16 continue the melody. Measure 17 is the start of a first ending, marked with a box and '1.', containing a triplet of eighth notes. This is followed by a repeat sign and a second ending, marked with a box and '2.', which concludes with a triplet of eighth notes.

The Rights of Man

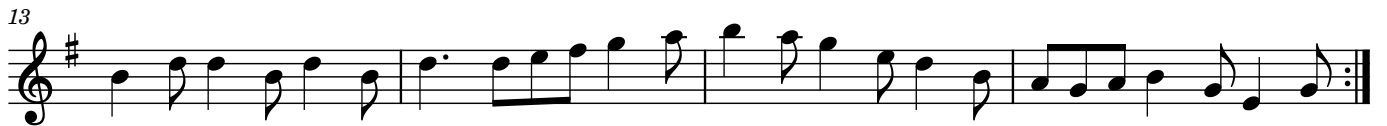
Swing



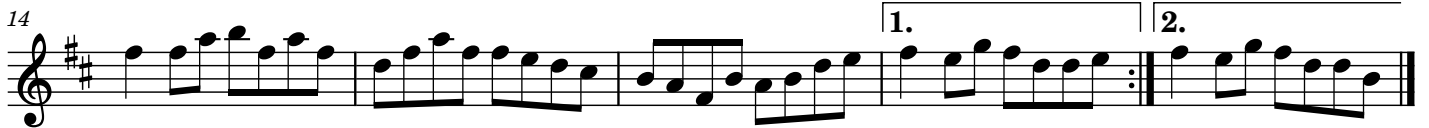
The Promenade



The Boys Of Ballisodare



Fred Finn's



Dunmore Lasses



The Blackthorn Stick



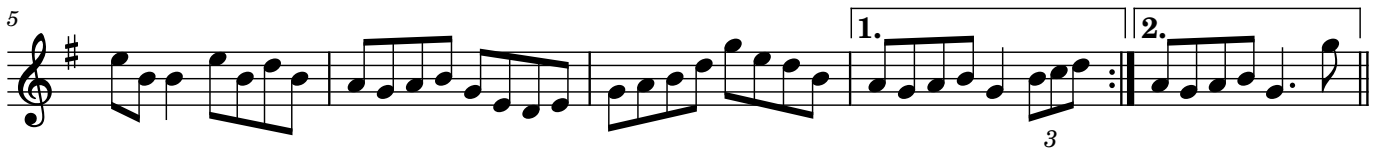
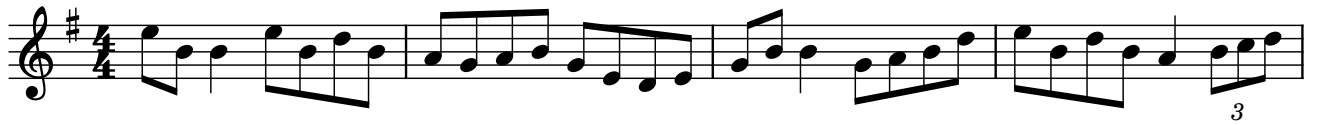
Merrily Kissed The Quaker



The Humours of Ennistymon



George White's Favourite



The Maid Behind the Bar



The Hag at the Churn



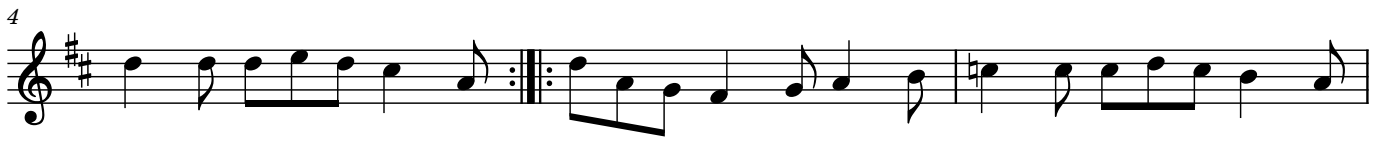
Morrison's Jig



The Kesh Jig



The Watermen's Dance



The Kid on the Mountain

slip jig

trad.



The Butterfly

slip jig

Tommy Potts



Father O'Flynn (D)

Father O'Flynn

Musical score for Father O'Flynn in D major, 6/8 time. The score consists of four staves. The first staff is the melody. The second and fourth staves are accompaniment. The second and fourth staves have first and second endings marked with '1' and '2' respectively. The key signature has one sharp (F#) and the time signature is 6/8.

The Killavil Jig (Em)

The Killavil

Musical score for The Killavil Jig in E minor, 6/8 time. The score consists of four staves. The first staff is the melody. The second and fourth staves are accompaniment. The second and fourth staves have first and second endings marked with '1' and '2' respectively. The key signature has no sharps or flats and the time signature is 6/8.

Kitty Lie Over (Jig) (The Frost is All Over 2, p.41)

Musical score for 'Kitty Lie Over (Jig)'. The score is written in treble clef with a key signature of two sharps (F# and C#) and a time signature of 6/8. It consists of four staves. The first staff begins with a repeat sign. The second staff contains two first and second endings, marked with '1' and '2' above the notes. The third staff continues the melody. The fourth staff also contains two first and second endings, marked with '1' and '2' above the notes.

The Old Favourite (Jig)

Musical score for 'The Old Favourite (Jig)'. The score is written in treble clef with a key signature of one sharp (F#) and a time signature of 6/8. It consists of four staves. The first staff begins with a repeat sign. The second staff ends with a repeat sign. The third staff continues the melody. The fourth staff contains two first and second endings, marked with '1' and '2' above the notes.

The Liltin' Banshee

Musical score for 'The Liltin' Banshee' in G major and 6/8 time. The score consists of four staves of music. The first staff begins with a repeat sign. The melody is characterized by eighth-note patterns and a mix of quarter and eighth notes. The key signature has one sharp (F#), and the time signature is 6/8.

East of Glendart (The Humours of Glendart, Jig)

Musical score for 'East of Glendart (The Humours of Glendart, Jig)' in G major and 6/8 time. The score consists of four staves of music. The first staff begins with a repeat sign. The melody is characterized by eighth-note patterns and a mix of quarter and eighth notes. The key signature has one sharp (F#), and the time signature is 6/8.

The Kerry polka

Musical score for "The Kerry polka" in G major, 2/4 time. The score consists of four staves of music. The first staff contains the first four measures with chord labels G, C, G, C, G, C. The second staff contains the next four measures with chord labels G, C, G, C, G, D, G. The third staff contains the next four measures with chord labels G, C, G, C. The fourth staff contains the final four measures with chord labels G, C, G, D, G. The key signature is one sharp (F#) and the time signature is 2/4.

The britches full of stitches

Musical score for "The britches full of stitches" in G major, 2/4 time. The score consists of four staves of music. The first staff contains the first four measures with chord labels G, C, G, C. The second staff contains the next four measures with chord labels G, C, G, C, G. The third staff contains the next four measures with chord labels G, C, G, C. The fourth staff contains the final four measures with chord labels G, C, G. The key signature is one sharp (F#) and the time signature is 2/4.

The boys of Blue Hill

The musical score for "The boys of Blue Hill" is written in D major (two sharps) and 4/4 time. It consists of five staves of music. The first staff begins with a treble clef, a key signature of two sharps (F# and C#), and a 4/4 time signature. The melody is primarily eighth and quarter notes, with several triplet markings. The guitar chords are indicated below the staff: D, G, A⁷, D, A⁷. The second staff continues the melody with chords D, G, D, G, A⁷. The third staff features a repeat sign and ends with a double bar line; its chords are D, A⁷, D, D. The fourth staff continues with chords Em, D, A⁷, D, G. The fifth and final staff concludes the piece with chords D, G, A⁷, D, A⁷, D.

The pride of Petravore

The image displays a musical score for the piece "The pride of Petravore". The score is written in G major (one sharp) and 4/4 time. It consists of four staves of music. The first staff begins with a treble clef, a key signature of one sharp (F#), and a 4/4 time signature. The melody is composed of quarter and eighth notes. Below the first staff, the chords Em, D, and Em are indicated. The second staff continues the melody and includes a repeat sign. Below it, the chords B⁷, Em, and C are shown. The third staff features a more complex melodic line with some rests. Below it, the chords G, B⁷, Em, C, and G are marked. The fourth and final staff concludes the piece with a repeat sign. Below it, the chords B⁷ and Em are indicated.

John Kelly's

G C G D C G

C D G G C

G Am C G

Am C G C

Dan Collins' father's

G C G D G C

G C G D G D G

G D G D G C

G C G D G D G

The Sally Gardens

The image displays a musical score for the song "The Sally Gardens". It is written in G major (one sharp) and 4/4 time. The score consists of four staves of music, each with chord annotations below it. The first staff begins with a treble clef, a key signature of one sharp (F#), and a 4/4 time signature. The melody is composed of eighth and quarter notes. The second staff continues the melody, ending with a double bar line and repeat dots. The third staff features a repeat sign at the beginning and includes a change to an A minor (Am) chord. The fourth staff concludes the piece with a final double bar line and repeat dots. The chord annotations are: Staff 1: G, C, G, C, G, C; Staff 2: G, C, G, C, G, D, G; Staff 3: G, C, Am; Staff 4: G, C, G, C, G, D, G.

G C G C G C

G C G C G D G

G C Am

G C G C G D G

The humours of Tulla

The musical score for "The humours of Tulla" is written in D major (one sharp) and 4/4 time. It consists of four staves of music. The first staff begins with a treble clef, a key signature of one sharp (F#), and a 4/4 time signature. The melody is composed of eighth notes, with a dotted quarter note at the end of each measure. The chords are D, G, D, G, D, G, D. The second staff features a first ending (1.) and a second ending (2.), both marked with a "3" and a bracket, indicating a triplet. The chords are G, G, D. The third staff continues the melody with a first ending (1.) marked with a "3" and a bracket. The chords are G, D, G. The fourth staff features a second ending (2.) marked with a "3" and a bracket. The chord is G.

The king of the fairies

Em D

Em G Em D Em

Em C Em

D Em C

Em D Em C D Em D

D G D C Em C Em

Em B⁷ Em

The Wedding Reel



The Sailor's Bonnet



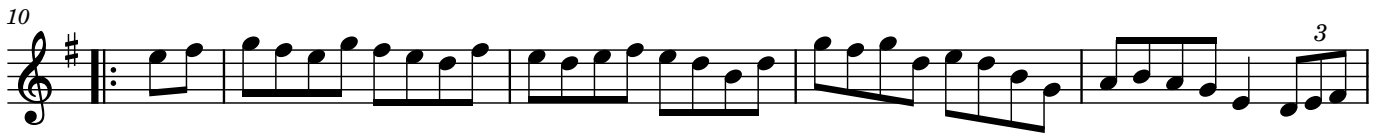
The Little Stack of Barley

Swing



Off to California

Swing



The Mountain Road



Cooley's Reel



Father Kelly's



The Sailor on the Rock



The Red Piper

Welsh

